



ANUGERAH KARYA MANDIRI

Ambulance Builder, Interior & Exterior, Repair & Service
Emergency & Medical Equipment

www.akma.co.id, email : sales@akma.co.id



PRODUCT CATALOG

Jl. Bhakti No.46 RT.008 RW 002, Tegalar, Kalideres, Jakarta Barat, Jakarta 11820, Indonesia
Telp. (021) 55959140

CV. ANUGERAH KARYA MANDIRI merupakan perusahaan yang bergerak di bidang *ambulance builder* dan jasa penyaluran peralatan kesehatan. Instansi kesehatan seperti Rumah Sakit, Instansi Pemerintah, Dinas Kesehatan, Puskesmas serta perusahaan - perusahaan yang berkonsentrasi pada pemberian pelayanan kesehatan adalah *stake-holder* dan mitra kerja kami dalam mewujudkan Visi "Terciptanya lingkungan instansi kesehatan yang kondusif bagi pelayanan kesehatan kepada masyarakat". Untuk mencapai visi yang mulia ini, kami memiliki misi "Memastikan tersedianya pasokan alat-alat kesehatan seperti mobil ambulance, perlengkapan emergency serta peralatan medis lainnya" dengan jaminan 100% dari keaslian produk-produk yang kami sediakan.

Saat ini **CV. ANUGERAH KARYA MANDIRI** mendapatkan kepercayaan sebagai vendor ambulance builder dari kendaraan Toyota, Volkswagen, Suzuki, Daihatsu dll untuk pengadaan Ambulance di Instansi pemerintah.

CV. ANUGERAH KARYA MANDIRI berinovasi mengembangkan kemampuan dan produk yang dihasilkan secara berkelanjutan guna memenuhi harapan dan kepuasan pelanggannya.

Kami mengucapkan terima kasih atas kepercayaan dan kerjasama yang sudah terjalin selama ini dari mitra kerja *supplier* dan terutama kepada seluruh pelanggan kami.

Suwarto



TABLE OF CONTENT

i	VISI & MISI
ii	TABLE OF CONTENT
1	AMBULANCE STRETCHER
2	BASKET STRETCHER
3	EMERGENCY STRETCHER
4	SCOOP STRETCHER
6	VACUUM MATTRESS
7	SPLINT
8	EXTRICATION COLLAR
9	HEAD IMMOBILIZER
10	EXTRICATION DEVICE
11	PORTABLE SUCTION
12	OXYGEN
15	WALL ANEROID SPHYGMOMANOMETER
15	PULSE OXIMETER
16	AED
16	VENTILATOR
17	EMERGENCY KIT
19	OTHERS
20	AMBULANCE EQUIPMENT
21	- AMBULANCE TOYOTA HIACE COMMUTER
22	- AMBULANCE TOYOTA HIACE PREMIO
23	- AMBULANCE TOYOTA HILUX
24	- AMBULANCE TOYOTA INNOVA
25	- AMBULANCE LUXIO / GRANMAX
26	- AMBULANCE SUZUKI APV
27	- AMBULANCE HYUNDAI H1 / STAREX MOVER
28	- AMBULANCE HINO DUTRO 110 SDB
29	INTERIOR

AMBULANCE STRETCHER

PATIENT HANDLING EQUIPMENT



Technical Data:

High position : ± 196 x 55 x 86 cm

Low position : ± 196 x 55 x 25 cm

Load capacity : <159 kg

AMBULANCE STRETCHER ROLL IN CHAIR COT

Technical Features:

- With capability to convert into wheel chair
- The mechanical legs are controlled by right handle
- The bed surface of the stretcher is made of waterproof foamed cushion, the backrest is adjustable which make patient feel comfortable
- It is made of aluminium alloy materials
- The size of castor: Ø 125 mm

AMBULANCE STRETCHER ROLL IN COT

Technical Features:

- The loading height can be adjusted: to fit different height of ambulance board
- The mechanical legs are controlled by the handles on both side
- The bed surface of the stretcher is made of waterproof foamed-cushion, the backrest is adjustable which make patient feel comfortable
- It is made of high-strength aluminium alloy materials
- The size of castor: Ø 125 mm, two with brakes



AUTOMATIC AMBULANCE STRETCHER - GECKO

Self-loading stretcher. Studied to optimize quality - price ratio. Built with painted stainless steel. This device grants all features of other self-loading stretchers as: adjustable back rest, 2 fixed wheels with brake and 2 rotating wheels diameter 200 mm self-catering, folding side protections. Supplied with belts.



Technical Data:

Material : Painted Steel

Folded height : 26 cm

Width : 56 cm

Height : 83 cm

Load capacity : ≤170 kg

Length : 197 cm

AMBULANCE STRETCHER

AMBULANCE STRETCHER ROLL IN CHAIR COT, EVOX - MEBER



Self-loading stretcher. Enables to settle the patient with the most comfortable position for its rescue and transport. Its conversion into chair allows access in all those confined spaces, such as elevators and hallways with tight corners, where a common stretcher cannot easily be manoeuvred. A gas pistons system allows to adjust EVOX in infinite positions until reaching the sitting position, relieving the operator from any sort of effort. Frame in stainless steel electro-polished, polyurethane wheels Ø 200 mm, safety command to prevent accidental closure, mattress divided into four separate sections and an attractive design are the ultimate features of this device, always more required by the markets.

BASKET STRETCHER



ONE PIECE BASKET STRETCHER

Technical Data:

Unfolded size : ± 216 x 61 x 19 cm

Load capacity : <300 kg

Technical Features:

- The stretcher is made with an eye on the very wide range of special emergency situation such as in the mountains, air and sea
- It is sturdy and flexible to use, its quick reliable fittings enable first-aid person to operate it rapidly and safely
- With it is special sling equipment, the stretcher is deal for lifted and transported by helicopter
- All the material used are non-toxic, non-polluting, fire-proof, wear-resistant and anti-corrosion



TWO PIECE BASKET STRETCHER

Technical Data:

Unfolded size : ± 218 x 61 x 19 cm

Folded size : ± 130 x 61 x 26 cm

Load capacity : <300 kg

Technical Features:

- The stretcher is made with an eye on the very wide range of special emergency situation such as in the mountains, air and sea
- It is sturdy and flexible to use, its quick reliable fittings enable first - aid person to operate it rapidly and safely
- With it is special sling equipment, the stretcher is deal for lifted and transported by helicopter
- All the material used are non-toxic, non-polluting, fire-proof, wear-resistant and anti-corrosion
- You can split it into two parts easy to carrying and storage

EMERGENCY STRETCHER

FOLDING STRETCHER TWO-FOLD



Technical Features:

- It's made of high strength aluminium alloy and oxford leather materials
- The stretcher with outrigger, it can be folded contracted by transverse and longitudinal, and with handbag

Technical Data:

Unfolded size : ± 208 x 55 x 13 cm

Folded size : ± 104 x 17 x 11 cm

Load capacity : 159 kg

FOLDING STRETCHER FOUR-FOLD



Technical Features:

- It's made of high strength aluminium alloy and oxford leather materials
- The stretcher with outrigger, it can be folded contracted by transverse and longitudinal, and with handbag

Technical Data:

Unfolded size : 214 x 54 x 12 cm

Folded size : 58 x 21 x 14 cm

Load capacity : 159 kg

FOLDING STRETCHER MODEL 122 - SPENCER



Technical Features:

- The stretcher is used as an emergency stretcher and also in condition where storage space lacks
- Non-slip handgrips
- Four feet rough terrain
- Cross bars add comfort and support for patient

Technical Data:

Unfolded size : 201 x 55 x 14 cm

Folded size : 100 x 11 x 17 cm

Load capacity : 170 kg

Weight : 6 kg

Handles : 4

Support feet : 4

EMERGENCY STRETCHER



TRACK ASSISTED STAIR CHAIR, EXTRA - MEBER

EXTRA is the stair chair with tracked system to descend stairs, entirely made in special aluminium alloy named ERGAL, it is nowadays one of the most-light in the market. The backrest and back carrying handles inclination, along with the unique frontal arms configuration, enable a perfect weight distribution, relieving operator efforts. Long and high-grip tracks allow the EXTRA stair chair to be safely manoeuvred and handled on 3 stairs when descending with a seated patient. While manoeuvring on smooth and plane surfaces, the 200 mm rear and 125 mm front wheels give exceptional comfort. It is completed with two practical armrests and a telescopic rear bar covered by a high comfort padded seat.

Technical Data:

Seat height	: 50 cm	Width	: 55 cm	Folded thickness	: 29 cm
Folded height	: 101 cm	Minimum length	: 81 cm	Weight	: 16,9 kg
Height	: 101 cm	Maximum length	: 139 cm	Load capacity	: 200 kg



STAIR CHAIR

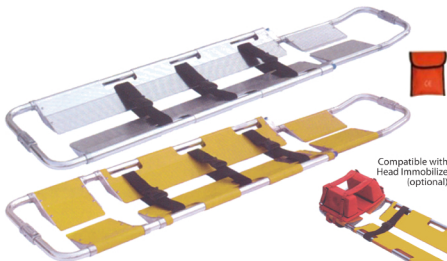
Technical Features:

- Pull through, telescoping long handles built in to lift patients & carry them through narrow passages
- Two handles on the top to facilitate the lifting of patients. working in harmony with telescoping handles
- The structure is made of high strength aluminium alloy, PVC seat
- Foldable, easy for storage
- With 3 PCS belts

Technical Data:

Unfolded size	: ± 69 x 51 x 90 cm
Folded size	: ± 18 x 51 x 90 cm
Load capacity	: >159 kg

SCOOP STRETCHER



Technical Data:

Unfolded size	: ± 214 x 42 x 7 cm
Folded size	: ± 167 x 42 x 7 cm
Load capacity	: <159 kg

SCOOP STRETCHER

Technical Features:

- The stretcher can be divided into left and right halves by the clutches in both end, side lock button is easy open
- It has extra low profile for sliding the stretcher easily beneath the patient to minimize the risk of further injury
- Adjustable length according to patient's height, easy to lock & unlock. And foldable
- It is made of high-strength aluminium alloy
- Accessories: 3 pcs belts

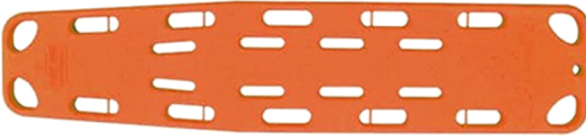
SCOOP STRETCHER

SCOOP STRETCHER MAXIMA - MEBER



Technical Features:

- It has an important role in first aid as it can be put under the patient without removing him
- The shape of the stretcher also enables the perfect immobilization of the patient during his transport
- The building and assembling materials have been specifically studied in order to meet load, reliability and life requirements
- Effective hooking and unhooking device for the stretcher uncoupling
- Adjustable length with automatic locking device



LONG SPINE BOARD

Technical Features:

- The holes on the edge are used for grip
- It can be used together with head immobilize
- It is made of polyethylene material, seamless, durable, non-pollution, allow X-ray. with 3 pcs belts

Technical Data:

Unfolded size : ± 184 x 45 x 7 cm

Load capacity : 180 kg



SHORT SPINE BOARD

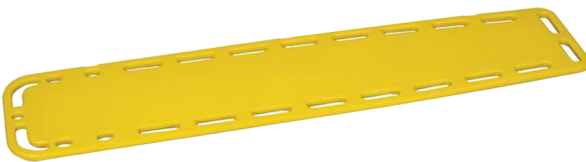
Technical Data:

Dimensions : 80 x 41 x 2.5 cm

Weight : 1.5 kg

Material : High-density polymer

Color : Orange



ADULT SPINAL BOARD, GALAXY - MEBER

Spinal board made of plastic material at high strength. Designed paying particular attention to the difficulties met during every day's interventions; they have 4 holes for the quick and total fixing of the head immobilizer and two cavities where the board lays on the floor, when the base is blocked in the traditional way, that allow to avoid damages to the rip-off straps during the usage of the spinal board or the accommodation in the ambulance. It has 12 handles for the transport and is supplied with 3 belts with rapid unhooking buckle (Art. 605/MEB). X-ray translucent.

Technical Data:

Size : Adults

Dimensions : 183 x 41 x 5 cm

Weight : 5,5 kg

Load capacity : 150 kg

Usage : Immobilization

Material : ABS

SCOOP STRETCHER



Technical Data:

Size	: Adults
Unfolded size	: ± 165 x 43 x 7,5 cm
Folded size	: ± 120 x 43 x 9 cm
Max length	: 201 cm
Weight	: 10,5 kg
Load capacity	: 170 kg

SCOOP STRETCHER, ERGON - MEBER

ERGON designed and developed by rescue operators and emergency devices expert technicians to offer outstanding performances, never achieved before. Guarantees maximum patient's comfort in the main decubitus areas thanks to a special soft material moulded on a high resistance plastic polymer (Me.Ber. Exclusive HC3 - High Comfort Composite Cell). Usage: Rescue, Immobilization, Transport. Material: HC3 - High Comfort Composite Cell, Aluminium alloy

VACUUM MATTRESS



VACUUM MATTRESS

Technical Features:

- It is made of high quality resistant TPU material with small form particles inside
- It adjusts perfectly to the shape of the body, moulding of the mattress
- X-Ray translucent
- First aid personal can rapidly and safely adjust the mattress to be soft or hard by using the pump. It is easy and quick operating



Technical Data:

Size	: Adults
Length	: 200 cm
Width	: 90 cm
Weight	: 6,7 kg
Load capacity	: 150 kg
Usage	: Immobilization
Material	: PVC-coated polyester

VACUUM MATTRESS, FLAKE - MEBER

Vacuum mattress with 3 independent chambers for an excellent and fast immobilization. Extremely light and sturdy, 8 handles, restraining belts and a perfect patient encirclement, give to the mattress unique solutions. Unmatchable vacuum durability without any deflection. X-ray transparent mattress.

SPLINT

Technical Data:

Dimensions : \pm 570 x 120 x 435 mm

Weight : 3.3 kg

Functioning temperature : from -15 to +50 °C

Storage temperature : from -20 to +65 °C



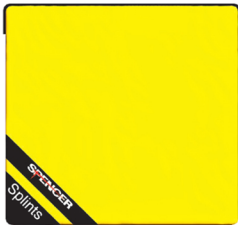
VACUUM SPLINT, RES-Q SPLINT

Technical Features:

- The tapered geometry, the strong welding, the wide surfaces for Velcro® fixing, the use of Phoretex, the realization of three chambers and the soft material covered with anti-allergic vinyl make these splints a perfect solution for immobilisation and eventually, thanks to the ergonomic shape, also for the cervical rachis
- The colour-coding on the straps on the part close to the patient's limb, will simplify the positioning operation
- They are compatible with traction systems and do not have to be removed for X-rays or CAT scan investigations
- They are easy to clean

Kit Contains:

- Splint size S (560 x 460 mm)
- Splint size M (720 x 500 mm)
- Splint size L (900 x 750 mm)
- Manual vacuum pump in aluminium
- Tear-proof nylon bag with storing compartment for the pump



AIR SPLINT, ECO AIR SPLINT - SPENCER

Technical Features:

- Versatile and simple to use immobilize arm and leg fractures
- A unique characteristic of these inflatable splints is the zipper
- The pressure in the air room can be controlled by inflating or deflating air, through the valve
- X-rays can be carried out without removing the splints

Technical Data:

Dimensions : 330 x 50 x 420 mm

Weight : 1.5 kg

Functioning temperature : from -10 to +60 °C

Storage temperature : from -20 to +60 °C

Kit Contains:

- Three splints of different sizes for the arm
- Three splints of different sizes for the leg
- Bag made of unbreakable nylon for the containment of the splints

WOOD SPLINT KIT

Technical Features:

- This splint is made of rounded corner plywood covered with foam padding & encased in a heavy poly material
- Kit consists of three size splint (two each) : 30 cm, 60 cm, 90 cm and carrying case



SPLINT



Technical Data:

Standard	: 4.25" x 36"	; 4oz	; roll and flat fold
Junior	: 4.25" x 18"	; 2.4oz	; flat fold
Wrist	: 4.25" x 9"	; 1.1oz	; flat
XL	: 5.5" x 36"	; 5.9oz	; flat fold
Finger	: 1.8" x 3.75"	; 0,2oz	; flat

- Core made of ultra-thin aluminium alloy
- Outer layer made of dermatologically safe, latex-free closed-cell foam

SAM SPLINT

The SAM® SPLINT is built from a thin core of aluminium alloy, sandwiched between two layers of closed-cell foam. The splint is exceptionally pliable and when bent into a simple curve, it becomes strong and supportive for any fractured or injured limb. The splint is extremely mouldable, and soft enough to cut with ordinary household scissors.



TRACTION SPLINT, DAVIS - SPENCER

Technical Features:

- To immobilize fractures of the femur and consequently to ease pain, prevent damage to the tendons, vascular and muscular tissues
- is easy to apply thanks to belts with Velcro® closures and soft band for the lifting of the ankles

Supplied with:

- Serrated traction mechanism and "S" shaped coupler
- Supporting feet and ring for the release of the blocking coupler
- Four padded support straps for the legs
- Strap and ischial padding
- Extendable strap for the ankle
- Transport bag

EXTRICATION COLLAR



ADJUSTABLE EXTRICATION COLLAR, PERFIT ACE - AMBU

Technical Features:

- The collar is radiolucent, CT and MRI compatible
- Adjustable sizes : Neckless, Short, Regulator, and Tall
- Number of settings : 16 adjustments
- Dimensions : 554 x 215 x 14 mm (21.8 x 8.5 x 0.6 ")
- Weight : 200 g (7 ounces)
- Color : White / light grey
- White/light grey plastic : Polypropylene material
- Foam : Polypropylene material

EXTRICATION COLLAR



Specific Characteristics:

- Anatomical shape of the occipital and mandibular part
- Quick application due to strap closure
- Access for tracheotomy
- Dedicated opening for carotid pulse control
- Comfortable contoured padding
- Carrying bag in nylon with zip closure

EXTRICATION COLLAR, SPECTAR - SPENCER

Bivalve cervical collars designed for use in first aid and emergency situations. They are identified as a solution for the immobilization of the cervical spine in trauma patients. Materials: LDPE, PE.

HEAD IMMOBILIZER

HEAD IMMOBILIZATION, SUPER BLUE - SPENCER



Technical Features:

- It is made of high-density foam, covered with water repellent material. Easy to use. Washable and easy to stock
- The head supports have an anatomic profile and offer a stable and comfortable support

Technical Data:

Total weight	: 1 kg
Fixation straps	: 2
Fixation straps	: Velcro® / straps
Dimensions	: 384 x 21 x 290 mm
Type	: Stuffed
Material	: Expanded PE / Spentex®
Compatibility with spine board	: All

Head Blocks	
Dimensions	: 245 x 80 x 160 mm
Weight	: 0,5 kg
Structure	: Stuffed pillows
Material	: Plastic Compound
Manufacturing system	: Injection
Plastic compound	: Injection

HEAD IMMOBILIZATION, CONTOUR - SPENCER



Technical Features:

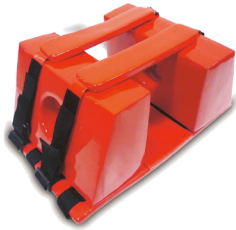
- Head immobilizer is composed of two mono blocks, made of a soft plastic material and a base with belts to fix to all of stretchers
- Can be easily cleaned and is X-ray compatible, latex free
- Fixation : Velcro® - Straps
- Auricular inspection : yes

Technical Data:

Base:	
Dimensions	: ± 390 x 15 x 260 mm
Weight	: 0.5 kg
Type	: Removable layer
Material	: Expanded PE - Spentex®
Manufacturing system	: Injection

Head blocks:	
Dimensions	: ± 235 x 130 x 160 mm
Weight	: 1 kg
Structure	: Stuffed pillows
Material	: Plastic compound
Manufacturing system	: Injection

HEAD IMMOBILIZER



HEAD IMMOBILIZATION, JELLY - MEBER

Technical Data:

Adjustable to every model of spinal boards. It is made of expanded materials at closed cells covered by a vinyl material.

Width : 40,5 cm

Depth : 25,5 cm

Height : 16,5 cm

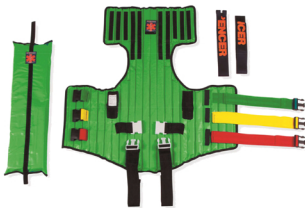
EXTRICATION DEVICE



EXTRICATION DEVICE

Technical Features:

- It is used to fix patient's back, suitable for rib injured patients
- The wrap-around design provides vertical rigidity for maximum support of the spine, neck and head
- It can be used when the patient is in sitting position, until they can be transferred to a long spine board
- Can be used together with cervical collar and head immobilized
- It is made of waterproof PVC; Internal board is anti-corrosion. X-ray translucent



EXTRICATION DEVICE, SED - SPENCER

Technical Features:

- Is an instrument for extrication and spine immobilization, ideal for all emergency situations.
- It is ideal for the immobilization of the hip and pelvis fractures
- The covering made of robust nylon covered in vinyl limits abrasions and assures total integrity
- The vertical rigidity and the horizontal flexibility, allows a rapid immobilization of the spinal column and a secure extrication
- The belts and the buckles are coloured for easy recognition
- Completely X-ray Compatible and Latex Free

Technical Data:

Dimensions : ± 860 x 820 mm

Total weight : 3 kg

Supplied with:

- Comfortable and robust transport bag
- Nape and chin strap
- Cushion to be used as padding for the back of the neck



EXTRICATION DEVICE MED - MEBER

Ideal for the immobilization and extraction of a patient blocked in an emergency situation as in case of accident. Its shape & structure, allows to fix horizontally and vertically the head and spine to limit all the injuries resulting from a wrong transport of the patient.

Supplied with:

Buckles and belts of different colours for an easy usage, padded cushion and two rip-off straps for forehead and chin.

ACCUVAC LITE - WEINMANN

RESPIRATION



The negative pressure range of the ACCUVAC Lite can be infinitely adjusted with the easy to use vacuum regulator. Every patient group from small children to adult can be treated. In addition to suctioning of the airway, ACCUVAC Lite also deflates vacuum splints and mattresses.

Benefits:

Variable use, safe and hygienic; Intuitive operation and robust construction; EN 1789-compliant, secure accommodation with wall mounting in vehicle; Compatible with existing wall mounting.

ACCUVAC PRO - WEINMANN



Technical Data:

Dimensions (W x H x D) ; Weight : 3.65 kg
• with canister system : 370 x 277 x 146 mm
• with canister system + accessories bag : 370 x 277 x 152 mm
Temperature range
• Operation : -5 °C to +50 °C
• Transport / storage : -40 °C to +70 °C

Maximum current consumption : 3.8 A
Rated voltage : 12 V DC nominal (min. 10 V, max. 15 V)
Suction capacity : 30-34 litres/min
Vacuum settings : Pre-defined levels: -0.1 bar, -0.2 bar, -0.5 bar, -0.8 bar, electronically regulated
Type of operation : S2 60 min
Degree of protection : IP34D
Rechargeable battery L-ion
Volume of secretions canister : 1000 ml
Reusable suction tube : 10 mm ID, 1300 mm long
Disposable suction tube : 7 mm ID, 1800 mm long

Technical Features:

- Classification as per EN ISO 10079-1: High vacuum/high flow
- Standards used: EN 60601-1, EN 60601-1-11, EN 60601-1-12, EN ISO 10079-1, EN 1789, RTCA DO-160 G
- High suction capacity of about 34 litres/minute at -0.8 bar (at device inlet)
- Rechargeable battery: user can easily change battery without tools
- Modern lithium-ion rechargeable battery with greater run time of more than 60 minutes
- Four pre-defined vacuum levels can be selected by user
- Automatic function check with rapid visual and acoustic feedback
- Safe secretion collection in auto-cleavable reusable secretions canister with disposable bacteria filter and overflow protection or disposable Serres® suction bag with integrated bacteria filter

OXYGEN

PORTABLE RESUSCITATOR, LSP L175

Performance Features:

- Portable Resuscitator is a fast, simple, and effective system to resuscitate a non-breathing patient while performing CPR, or to provide 100% oxygen to a breathing patient on demand with minimal inspiratory effort
- Regulator supply pressure: 40-60 psig at 2200 psig
- Case dimensions: Plastic case: 8" x 9,5" x 23,5" (20,3 x 24,1 x 59,7 cm)

Kit Contains:

- Demand / resuscitator valve L063-05R
- Oxygen regulator L270-220
- Reusable aspirator L146-020
- Oxygen hoses, 6", green L525026
- Aluminium D Cylinder (empty)
- Child airway
- Adult airway
- Adult oxygen mask



MANUAL RESUSCITATOR / BMV - EZY BAG

- 100% Latex free in silicone
- Autoclavable
- Adult type for patient >30 kg
- Child type for patient 7 - 30 kg
- Infant type for patient <7 kg
- With carry case



BASIC OXYGEN KIT

- Aluminium pin index cylinder (400 L)
- Unibody brass regulator 15 LPM, constant flow only
- Nasal Cannula
- Tubing and mask O2
- Nylon carry case
- Manual resuscitator bag for adult



OXYGEN THERAPY SET

- 1 Steel BSS cylinder 1 m³
- 1 Oxygen Regulator BSS
- 1 O2 mask
- 1 Cylinder trolley / bracket (Ambulance only)

INTUBATION KIT

Kit Contains:

- 1 Laryngoscope Kit (Blade and handle)
- 1 Set ETT (5, 5.5, 6, 6.5, 7, 7.5, 8)
- 1 Bite stick
- 1 Nasal airway kit
- 1 water based lubricant
- 1 intubation case
- 1 Magil forceps
- 1 Stylet
- 1 Mount opener
- 1 Oral airway kit
- 1 dermicel tape



OXYGEN

HAND SUCTION, EZY VAC - BAWMED UK

Technical Features:

- Compact and lightweight
- Requires very little force
- Offers superior performance
- No regular maintenance required
- Takes up very little space in your kit bag
- Stores easily in most emergency kit
- Prevents contamination inside the pump / handle Abd eliminated
- Through procedures and prevents inconvenient exhaust splashing of liquids
- Easy to squeeze
- Fast and powerful
- Low-cost operation
- Overflow protection
- Need for flush
- No special storage conditions required



CPR BOARD

Technical Features:

- The head up maintains proper alignment with the patient's head, ensure the patients open airway
- Made of polyethylene
- X-ray Translucent

MODUL CPAP - WEINMANN

For safe and highly effective CPAP therapy at the scene of emergency.

Great operating convenience. **Performance Features:**

- Simple, safe, and robust operation makes device ideal for pre-hospital use
- Immediately ready for use
- Setting and monitoring of CPAP therapy in a single device
- Simple and safe set-up without additional equipment
- Supplemental oxygen feed via O2 Walther coupling
- Always available immediately at patient's side, it is integrated in LIFE-BASE portable system
- Administration of CPAP therapy in every situation with the help of a two-meter-long hose



Maximum Therapy Comfort:

- High patient tolerance, CPAP valve design, The patient always receives the desired amount of air and can breathe easily at all times
- Individual adjustment of CPAP pressure for each patient and therapy session by means of infinitely adjustable CPAP pressure settings
- High pressure stability throughout complete therapy range. Almost always 100% oxygen made possible by constant. Flow technology.

MODUL OXYGEN - WEINMANN

Performance Features:

- Infinitely adjustable oxygen inhalation for 0 to 15 litres/minute, with O2 quick coupling (Walther) and straight connection nozzles for inhalation tube
- 4.5 bar Outlet for medical oxygen ventilator supply
- Safety and compact module for Central oxygen in ambulance



OXYGEN

OXYGEN REGULATOR BULLNOSE, OXYWAY

- Adapted to meet your needs: the right pressure reducer for every use
- High level of flexibility due to modular system and wide variety of models available
- Simple, quick and precise flow setting
- Light: OXYWAY pressure reducers are amongst the lightest on the market
- Long service life and high level of operating safety due to the use of corrosion-resistant and oxygen-compatible materials



OXYGEN REGULATOR PIN INDEX, LSP L270

Performance Features:

Supply pressure : 500 to 2200 psi

Outlet pressure : High flow outlets : 40 to 60 psi at 500 to 2200 psi inlet pressure

Flow capacity : High flow outlets : 125 lpm minimum single or combined flow with 500 psi inlet pressure

Constant flow outlet selections : 0-15 lpm: 0.5, 1, 1.5, 2, 3, 4, 5, 6, 8, 10, 15
: 0-25 lpm: 0.5, 1, 1.5, 2, 4, 6, 8, 10, 12, 15, 20, 25

Technical Data:

Materials:

Body : Nickel-plated brass

Knob : Anodized aluminium

Outlet : Nickel-plated brass

Internal parts : Brass, stainless steel, viton®, silicon, and Teflon®

Filter : 25-micron sintered bronze

Safety relief pressure : 75-125 psi

Operating temperature : 75-125 psi

Storage temperature : -20° F to 120° F



MULTI PARAMETER PATIENT MONITOR AURORA 12S

Technical Features:

- 12.1" high resolution TFT LCD screen (Touchscreen)
- Basic 5 standard parameters : ECG, NIBP, SpO2, RESP, Temp
- 3/5 lead, max 7 ECG wave forms display
- No fan design, unique heat dissipation system
- Audible & visual alarm and adjustable alarm limits
- SD card slot, SIM (3G) port, USB (4pcs), RJ45 connector for transferring patients' data to PC
- 240 hours vital sign trend review, 240 hours storage and review for Arrhythmia, 1200 groups of NIBP data stored capacity
- Rechargeable high-energy li-ion battery

WALL ANEROID SPHYGMOMANOMETER

ABN REGAL WALL MODEL, CLOCK ANEROID SPHYGMOMANOMETER GAUGE

Technical Data:

Accuracy	: ± 3 mmHg
Scale	: - 0 - 300 mmHg with 2 minor graduations Major graduation at each 10 mmHg Arabic numerals at each 20 mmHg division
Material	: ABS Plastic
Color	: Pantone cool grey 1C
Faceplate	: Black with luminescence scale
Lens Material	: Clear plastic ; Serial Number is imprinted on faceplate
Internal Mechanism	: No pin stop
Durability	: ± 3 mmHg throughout the pressure range after 10.000 alternating pressure cycles



Inflation System:

Assembled latex bladder 2 tubes with black nylon cuff with ABN label → Latex bulb with ABN logo with deluxe valve assembled → Coiled tube → Extended tubing with deluxe metal connector



VISO BUMPER - SPENCER

Technical Data:

Material	: Thermoplastic rubber
Scale	: 0-300 mm Hg
Dimension diameter	: \varnothing 146 mm
Weight	: 1,2 kg

NELCOR OXIMAX N65

Performance Features:

Display Range

- SpO₂ : 0%-100%
- Pulse rate : 20 – 250 bpm
- Accuracy saturation : (% SpO₂: ± 1 SD)
- Low perfusion : 70 to 100 % ± 2 digits

Pulse rate

- Low perfusion : 20 o 250 bpm ± 3 digits

Power Requirements

- 6 volts supplied by four AA-size batteries

Battery Life

- Alkaline : 19 hours (typical)
- Lithium : 40 hours (typical)

Physical characteristics size

- 2.8 x 6.2 x 1.4 (inches) / (7.3 x 15.8 x 3.5 cm)

Displays

- Oxygen saturation, pulse rate, vertical bar graph

PULSE OXIMETER



PULSE OXIMETER

FINGER PULSE OXIMETER, ONYX VANTAGE 9590

The Onyx is the only finger pulse oximeter with scientifically proven accuracy and is tested for use on fingers, thumbs and toes

- Scientifically proven accuracy in the widest range of patients
- Proven accuracy
- Cost efficient
- 4 years warranty and up to 6000 spot checks on two AAA batteries
- Accurate readings on your challenging cases due to low perfusion and darker skin tones and, Onyx Vantage 9590 has been tested in motion
- One unit work on paediatric to larger adult patients and can be used on fingers, thumb or toes



AED

MEDUCORE STANDARD - WEINMANN

Advance Life Support Equipment

Everything in one mobile system - a world - wide first.

Besides close monitoring, youth emergency patients may need oxygen therapy or emergency ventilation. Up until now, you had to have several devices on hand to serve all their needs. Now for the first time MEDUCORE STANDARD combines defibrillation, monitoring, oxygen therapy and ventilation in a single mobile system.



Meducore standard is your strong partner for resuscitation. The defibrillator support EMT's with automatic analysis of cardiac rhythm, understandable voice prompts and a metronome for chest compressions so you can keep an eye on everything. Trained users can choose to trigger defibrillation manually and do without the automatic heart rhythm analysis. The simple menu navigation and the professional alarm system ensure reliable monitoring and patient care. The long rechargeable battery life and the compact and rugged construction of MEDUCORE STANDARD also contribute to providing the best possible emergency medical care. The large color display of ECG and other important parameters of heart rate, pulse and oxygenation keep the user informed at all times. All these features and functions make MEDUCORE STANDARD the perfect partner in the care of emergency patients under the toughest conditions.

VENTILATOR

VENTILATOR, MEDUMAT EASY CPR - WEINMANN

User-friendly operation: Small and space saving, Light and handy, Easy to transport, Simple integration in CPR process

Guideline compliance

- Tidal volume: 6 - 7 ml/kg weight; 500 ml - 600 ml at $f = 10/\text{min}$
- Ventilation phase in CPR mode : max. 5 seconds
- Both hand free for mask ventilation
- Acoustic metronome signal $f > 100/\text{min}$ ensures the correct chest compression frequency safety
- Metronome function ensures correct frequency for CPR
- Switch for ventilation pressure limit (20 mbar / 45 mbar)
- Maximum ventilation pressure can be set
- Visual and acoustic alarms
- Clear and explicit voice prompts
- Safe selection of ventilation parameters



VENTILATOR

MEDUMAT STANDARD 2 - WEINMANN

More functions for emergency medical staff. MEDUMAT STANDARD 2 has many more function. Access to ventilation, for example, is gained by entering the patient's height. Modes includes IPPV, CPR, RSI (Rapid Sequence Intubation for support with induction of anaesthesia, and CPAP (for non-invasive therapy).



All treatment is based on current guidelines such as the ERC Guidelines 2010 for CPR, but parameters may also be set by the user. If even more flexibility is desired, other optional ventilation modes and functions (SIMV, S-IPPV and inhalation) can be activated.

EMERGENCY KIT

EMERGENCY KIT DELUXE, AM-5001D

BASIC LIFE SUPPORT EQUIPMENT

I. AIRWAY MANAGEMENT SUPPORT :

- 1 set Guedel Airway (7 size)
- 1 set Endotracheal Tube (7 size)
- 1 pc Laryngoscope Handle
- 1 set Laryngoscope Blade, size.1, 2, 3
- 1 tube Xylocaine Jelly 2%
- 1 pc Stylet
- 1 pc Adult Magill Forceps
- 1 roll Adult Micropore
- 1 ea Pro-Series Shears



II. VENTILATION SUPPORT :

- 1 pc CPR Mask
- 1 pc Tong Spate! Stainless Steel
- 1 pc Ambu Bag Adult & Child
- 1 pc Manual Suction (Hand)

III. MINOR SET :

- 1 pcs Thumb Dressing Forcep 14 cm
- 1 pcs Tissue Forcep (1x2 Teeth) 14 cm
- 1 pcs Operating Scissors S/B STR 14 cm
- 1 pcs Operating Scissors S/B STR 14 cm
- 1 pcs Kelly Forceps Straight 14 cm
- 1 pcs Halsted Mosquito Forceps Curved 12.5
- 1 pcs Halstead Mosquito Forceps Curved 2.5
- 1 pcs Mayo Hegar Needle Holder 14 cm
- 1 pcs Mayo Scissors 14 cm
- 1 pcs Scalpel Handle No.3
- 5 pcs Scalpel Blade No.10
- 1 pcs Instrument Bak 24x12x4.5 cm

IV. OXYGEN :

- 1 pc Tabung Aluminium
- 1 pc Pin Index

V. OTHERS :

- 1 pc Aneroid Sphygmomanometer
- 1 pc Stethoscope Duplex
- 1 ea Thermometer
- 5 pcs Infusion Set
- 5 pcs Interavenus Cathether size. 24
- 5 pcs Interavenus Cathether size. 22
- 5 pcs Interavenus Cathether size. 20
- 2 ea Kain Segitiga (Mitela)
- 2 box Kasa Sterile 16 x 16 cm
- 1 ea Kapas 50 gr
- 2 ea Pembalut Cepat size .1
- 1 ea Pembalut Cepat size .2
- 1 ea Pembalut Cepat size .3
- 1 roll Elastis Perban 7.5,10,15 cm
- 10 ea Plester Cepat
- 1 roll Plester Gulung
- 1 pack Perban Gulung 5 cm
- 1 pack Perban Gulung 10 cm
- 2 ea Sofratulle
- 1 pack Cotton Bud
- 10 ea Alcohol Swab
- 1 botol Betadine 60 ml
- 1 ea Gunting Verban
- 1 ea Pinset Anatomy 14 cm
- 1 ea Penlight
- 1 lusin Safety Pins
- 10 ea Sarung Tangan
- 5 ea Masker
- 2 pc Ice Commpres
- 1 botol Glugosa, RL
- 1 pc Tournyquet
- 1 botol Alkohol
- 5 pc Siring 3 ml
- 3 pc Siring 5 ml
- 1 pc Reflex Hammer
- 1 pc Soft Case

EMERGENCY KIT

EMERGENCY KIT STANDARD, AM-5001

I. AIRWAY MANAGEMENT SUPPORT :

- 1 set Guedel Airway (7 size)
- 1 set Endotracheal Tube (7 size)
- 1 pc Laryngoscope Handle
- 1 set Laryngoscope Blade, size.1, 2, 3
- 1 tube Xylocaine Jelly 2%
- 1 pc Stylet
- 1 pc Adult Magill Forceps
- 1 roll Adult Micropore



II. VENTILATION SUPPORT :

- 1 pc CPR Mask
- 1 pc Tong Spate! Stainless Steel
- 1 pc Ambu Bag Adult & Child
- 1 pc Manual Suction (Hand)

III. MINOR SET :

- 1 pcs Thumb Dressing Forcep 14 cm
- 1 pcs Tissue Forcep (1x2 Teeth) 14 cm
- 1 pcs Operating Scissors S/B STR 14 cm
- 1 pcs Operating Scissors S/B STR 14 cm
- 1 pcs Kelly Forceps Straight 14 cm
- 1 pcs Halsted Mosquito Forceps Curved 12.5
- 1 pcs Halstead Mosquito Forceps Curved 2.5
- 1 pcs Mayo Hegar Needle Holder 14 cm
- 1 pcs Mayo Scissors 14 cm
- 1 pcs Scalpel Handle No.3
- 5 pcs Scalpel Blade No.10
- 1 pcs Instrument Bak 24x12x4.5 cm

IV. OTHERS :

- 1 pc Aneroid Sphygmomanometer
- 1 pc Stethoscope Duplex
- 1 ea Thermometer
- 5 pcs Infusion Set
- 5 pcs Interavenus Cathether size. 24
- 5 pcs Interavenus Cathether size. 22
- 5 pcs Interavenus Cathether size. 20
- 2 ea Kain Segitiga (Mitela)
- 2 box Kasa Sterile 16 x 16 cm
- 1 ea Kapas 50 gr
- 2 ea Pembalut Cepat size .1
- 1 ea Pembalut Cepat size .2
- 1 ea Pembalut Cepat size .3
- 1 roll Elastis Perban 7.5,10,15 cm
- 10 ea Plester Cepat
- 1 roll Plester Gulung
- 1 pack Perban Gulung 5 cm
- 1 pack Perban Gulung 10 cm
- 2 ea Sofratulle
- 1 pack Cotton Bud
- 20 ea Alcohol Swab
- 1 botol Betadine 60 ml
- 1 ea Gunting Verban
- 1 ea Pinset Anatomy 14 cm
- 1 ea Penlight
- 1 lusin Safety Pins
- 10 ea Sarung Tangan
- 5 ea Masker
- 2 pc Ice Commpres
- 1 botol Glugosa, RL
- 1 pc Tournyquet
- 1 botol Alkohol
- 5 pc Siring 3 ml
- 3 pc Siring 5 ml
- 1 pc Reflex Hammer
- 1 pc Soft Case

BLS KIT

Kit Contains:

- Airways : CPR mask, Disposable airways kit
- Burn : Burn sheet

Bandages :

- 16 adhesive bandages, 2 abdominal pads, 1 trauma dressings, 20 sterile dressings 4 x 4"m, 10 sterile dressing 3 x 3", 2 gauze rolls 3" NS, 1 elastic bandage 4", 1 petroleum gauze, 2 blood stoppers, 4 eyes pads, 2 kerlix, 2 triangular bandages, 1 elastic bandages 3", 2 gauze rolls 4" NS, 1 waterproof tape 1", 1 waterproof tape ½"

Equipment & Suppliers :

- 1 BP/stethoscope kit, 2 coldpacks, 1 no rinse gel (113 gr), instrument pack (shears, Kelly forcep, bandage scissor, splinter forcep, pen light), 1 eye wash, 10 antiseptic pads, 10 alcohol pads, 5 pairs exam gloves, 1 bee sting swap, 1 emergency blanket, 1 antibiotic, 1 hand wash gel, 1 BLS bag



EMERGENCY KIT

RESCUE PACK - WEINMANN



Shouldering an Emergency

Long and difficult stretches of road? Big gathering of people? At high altitudes or for water rescue? – An emergency that's anything but routine is ideal for the RESCUE PACK emergency backpack from WEINMANN emergency. The RESCUE PACK successfully combines the advantages of a conventional emergency case with the benefits of a backpack. There's no need to open the main compartment of the backpack. Just open the front two flaps for fast and efficient access to the things you need right away.

FIRST AID KIT, AM-5003

Kit Contains:

1pc soft case, 1 box gauze sterile, 1 roll cotton wool 50 gr, 1 roll elastic bandage 3, 4, 7", 10 roll gauze non sterile 10 cm, 5 roll gauze non sterile 5 cm, 1 pcs triangular bandages, 2 pcs wound dressing small, 1 pc wound dressing medium, 1 pc wound dressing large, 1 pax cotton buds, 1 pc bandage scissor, 1pc pinset anatomy 14 cm, 1 pc penlight, 1 pc thermometer, 10 pcs gloves non sterile, 10 pcs masker, 1 pack safety pin, 1 roll micropore 0,5", 1 roll leucoplast 0,5", 10 pcs band aid, 1 strips panadol, 1 strips aspirin, 1 strips antacid, 1 strips Mylanta, 1 strip primparan, 1 strips Imodium, 1 strips dulcolax, 1 strips buscopan, 10 ea alcohol swab, 1 bottle betadine 60 ml.



BITE & STING KIT

Removes poisons from snake bites, bee, wasp stings, mosquito bites.

Kit Contains:

- 1 extractor pump
- 4 plastic cups
- 3 sterile adhesive bandages
- 1 razor
- 2 alcohol wipes
- 1 plastic case
- 2 insect bite antiseptic & pain reliever towelettes



BURN KIT, WATER JELL

Pack Contains:

- 2 sterile gel soaked 5 x 15 cm
- 1 burnjel
- 2 sterile gel soaked 10 x 10 cm
- 1 universal bandage scissors
- 1 sterile gel soaked 10 x 40 cm
- 1 Conforming bandages BP
- 1 sterile gel soaked 30 x 40 cm
- 1 instructions card
- 1 soft case



OTHERS



BODY BAG



RING CUTTER



SPIDER STRAP

AMBULANCE EQUIPMENT

LIGHT BAR OVAL/THIN



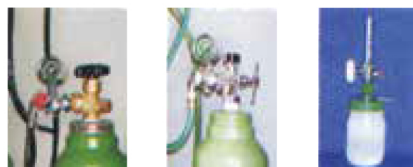
- Low profile halogen rotator, strobe or LED lights
- Two tier 360° warning power
- Mounting adapter
- Durable dome
- Dome color options: red / blue
- Lightbar controller & siren system is included
- Made in China

SIRINE



- Multi voice siren system (6 function)
- Function : AUX, WAIL, YELP, & HI-LO, PA feature
- Deluxe microphone
- Operates one 100 Watt speaker
- Made in China

CENTRAL OXYGEN SYSTEM



BSS System Pin Index System Wall outlets



- Adjustable Lamp
- 50 watt halogen bulb for high visibility
 - Adjustable neck

OPERATION LAMP



- Sliding Lamp
- 2 Halogen / LED Lights
 - Adjustable spotting view
 - Moveable sliding positioning

STRETCHER PLATFORM



PLAFOND PLATFORM



COMPARTEMENT CABINET





AMBULANCE TOYOTA HIACE

TOYOTA

SPESIFIKASI PERLENGKAPAN AMBULANCE TOYOTA HIACE COMMUTER



Type Ambulance		Transport Plus	Transport 1	Transport	Basic Plus	Basic 1	Basic	Mobil Jenazah
Exterior dan Interior								
1	LED Flash Light Bar Oval, 12VDC, Merah - Merah	√	√	√	√	√	√	√
2	Sirene multi suara lengkap dengan Mic, 12VDC, 100watt	√	√	√	√	√	√	√
3	Logo dan tulisan standard , reflektif sticker / kombinasi digital printing	√	√	√	√	√	√	√
4	Kaca film 60%-80%	√	√	√	√	√	√	√
5	Lampu sorot kabin belakang model LED	√	√	√	√	√	√	√
6	Bumper belakang dilapisi plat stainless steel untuk pelindung benturan Stretcher Plafon dan kompartmen/rak atas dari bahan fiber, dengan aksesoris: - Tempat tisu dan tempat masker - Steel bar untuk pegangan Paramedik	√	√	√	√	√	√	√
7	- Lampu penerangan peralatan dan lampu penerangan ruangan model LED drop ceiling terbuat dari rangka aluminium extrude yang berfungsi sebagai peredam panas	√	√		√	√		
8	Penyekat kabin driver dari bahan fiber dilengkapi dengan kaca tempered	√	√	√	√	√	√	√
9	Intercom dua arah untuk komunikasi antara kabin driver dengan kabin perawatan	√	√	√	√	√	√	√
10	Lantai, PVC Sheet dilapis Vinyl, Hospital Grade	√	√	√	√	√	√	√
11	Jok Pengiring / Paramedik model box dengan ruang untuk menyimpan peralatan bahan plat besi M5 finishing powder coating, dilengkapi safety belt 2 titik Lemari peralatan medis, terbuat dari bahan fiber dengan aksesoris: - Tempat sarung tangan 3 ukuran - Dua buah rell untuk braket peralatan kesehatan bahan aluminium extrude dan braket alat kesehatan - Roll bar untuk tempat Syringe Pump dan Infuse Pump - Wastafel	√	√	√	√	√	√	√
12	a Lemari Peralatan Medis, bahan plywood finishing akrilik lengkap dengan Wastafel			√		√	√	√
13	APAR kapasitas 1 Kg lengkap dengan braket	√	√	√	√	√	√	√
14	a Jok Dokter / Paramedik model fix lengkap dengan safety belt 2 titik b Jok Dokter / Paramedik model dapat berputar posisi, dudukan dapat dilipat, sandaran reclining dilengkapi sabuk pengaman 3 titik	√	√	√	√	√	√	√
15	2 buah lampu periksa Pasien, dapat di atur arah cahayanya, 3W Philips LED Spot LV	√	√	√	√	√	√	√
16	Gantungan infus kapasitas 2 kolf, hook dapat digeser dan dilipat, dilengkapi dengan straps botol infus	√	√	√	√	√	√	√
17	a Landasan / Base Stretcher full stainless steel dengan ruang tempat Scoop Stretcher dan dilengkapi dengan rell, stopper serta pengunci Stretcher b Landasan / Base Stretcher plywood dilapis dengan vinyl dengan ruang tempat Scoop Stretcher dan dilengkapi dengan rell, stopper serta pengunci Stretcher	√	√	√	√	√	√	√
18	Sumber listrik DC 12VDC 3 outlet dan AC 220VAC 6 outlet	√	√	√	√	√	√	√
19	Power inverter DC to AC, 1500W Pure Sine Wave	√	√	√	√	√	√	√
20	a Kontrol Kelistrikan dengan panel touch screen b Kontrol Kelistrikan dengan saklar manual model piano lengkap dengan dimmer dan indikator voltage accu	√	√	√	√	√	√	√
21	Fixed Central Gas System # 2 buah Tabung Oxygen kap. 1 m3 # 2 buah Regulator Oxygen Standar # 1 set Selang Oxygen tekanan tinggi, SMC Japan # 1 set Pengatur keluaran Oxygen secara otomatis, terdiri dari : pressure sensor, layar monitor 3,5" menampilkan indikator pemaknaan tabung oxygen primary dan sekunder, visual persentase isi tabung oksigen dengan akurasi 1% dan pembacaan tekanan dengan satuan psi, alarm buzzer kondisi oksigen akan habis dengan manual saklar untuk reset # 2 buah keluaran dinding dengan tulisan "OXYGEN" # 1 set Flowmeter dan Humidifier # 1 set Nasal Canula dan Masker Oksigen	√	√	√	√	√	√	√
22	a Automatic Ambulance Stretcher, Roll in Chair Cot; Eropa Produk b Automatic Ambulance Stretcher, Roll in Chair Cot; Asia Produk c Automatic Ambulance Stretcher, Roll In Cot; Eropa Produk d Automatic Ambulance Stretcher, Roll in Cot; Asia Produk	√	√	√	√	√	√	√
23	Keranda Jenazah							√
24	Folding Scoop Stretcher	√	√	√	√	√	√	√

Authorized Toyota Dealer



PT.ASTRA INTERNASIONAL Tbk SO

WIRA TOYOTA
Authorized Dealer

PT.NEW RATNA MOTOR
WIL : JATENG , DIY



AMBULANCE TOYOTA HIACE

TOYOTA

SPESIFIKASI PERLENGKAPAN AMBULANCE TOYOTA HIACE PREMIO



Type Ambulance		Transport Plus	Transport 1	Transport	Basic Plus	Basic 1	Basic	Mobil Jenazah
Exterior dan Interior								
1	LED Flash Light Bar Oval, 12VDC, Merah - Merah	√	√	√	√	√	√	√
2	Sirene multi suara lengkap dengan Mic, 12VDC, 100watt	√	√	√	√	√	√	√
3	Logo dan tulisan standard , reflektif sticker / kombinasi digital printing	√	√	√	√	√	√	√
4	Kaca film 60%-80%	√	√	√	√	√	√	√
5	Lampu sorot kabin belakang model LED	√	√	√	√	√	√	√
6	Bumper belakang dilapisi plat stainless steel untuk pelindung benturan Stretcher Plafon dan kompartemen/rak atas dari bahan fiber, dengan aksesoris: - Tempat tisu dan tempat masker - Steel bar untuk pegangan Paramedik	√	√	√	√	√	√	
7	- Lampu penerangan peralatan dan lampu penerangan ruangan model LED drop ceiling terbuat dari rangka aluminium extrude yang berfungsi sebagai peredam panas	√	√		√	√		
8	Penyekat kabin driver dari bahan fiber dilengkapi dengan kaca tempered	√	√	√	√	√	√	√
9	Intercom dua arah untuk komunikasi antara kabin driver dengan kabin perawat	√	√	√	√	√	√	√
10	Lantai, PVC Sheet dilapis Vynil, Hospital Grade	√	√	√	√	√	√	√
11	Jok Pengiring / Paramedik model box dengan ruang untuk menyimpan peralatan bahan plat besi M5 finishing powder coating, dilengkapi safety belt 2 titik Lemari peralatan medis, terbuat dari bahan fiber dengan aksesoris: - Tempat sarung tangan 3 ukuran - Dua buah rel untuk braket peralatan kesehatan bahan aluminium extrude dan braket alat kesehatan - Roll bar untuk tempat Syringe Pump dan Infuse Pump - Wastafel	√	√	√	√	√	√	√
12	a Lemari Peralatan Medis, bahan plywood finishing akrilik lengkap dengan Wastafel	√	√	√	√	√	√	√
13	b APAR kapasitas 1 Kg lengkap dengan braket	√	√	√	√	√	√	√
14	a Jok Dokter / Paramedik model fix lengkap dengan safety belt 2 titik	√	√	√	√	√	√	√
14	b Jok Dokter / Paramedik model dapat berputar posisi, dudukan dapat dilipat, sandaran reclining dilengkapi sabuk pengaman 3 titik	√	√	√	√	√	√	√
15	2 buah lampu periksa Pasien, dapat di atur arah cahayanya, 3W Philips LED Spot LV	√	√	√	√	√	√	√
16	Gantungan infus kapasitas 2 kolf, hook dapat digeser dan dilipat, dilengkapi dengan straps botol infus	√	√	√	√	√	√	√
17	a Landasan / Base Stretcher full stainless steel dengan ruang tempat Scoop Stretcher dan dilengkapi dengan rel, stopper serta pengunci Stretcher	√	√	√	√	√	√	√
17	b Landasan / Base Stretcher plywood dilapis dengan vynil dengan ruang tempat Scoop Stretcher dan dilengkapi dengan rel, stopper serta pengunci Stretcher	√	√	√	√	√	√	√
18	Sumber listrik DC 12VDC 3 outlet dan AC 220VAC 6 outlet	√	√	√	√	√	√	√
19	Power Inverter DC to AC, 1500W Pure Sine Wave	√	√	√	√	√	√	√
20	a Kontrol Kelistrikan dengan panel touch screen	√	√	√	√	√	√	√
20	b Kontrol Kelistrikan dengan saklar manual model piano lengkap dengan dimmer dan indikator voltage accu	√	√	√	√	√	√	√
21	Fixed Central Gas System # 2 buah Tabung Oxygen kap. 1 m3 # 2 buah Regulator Oxygen Standar # 1 set Selang Oxygen tekanan tinggi, SMC Japan # 1 set Pengatur keluaran Oxygen secara otomatis, terdiri dari : pressure sensor, layar monitor 3,5" menampilkan indikator pemakaian tabung primary dan sekunder, visual persentase isi tabung oksigen dengan akurasi 1% dan pembacaan tekanan dengan satuan psi, alarm buzzer kondisi oksigen akan habis dengan manual saklar untuk reset # 2 buah keluaran dinding dengan tulisan "OXYGEN" # 1 set Flowmeter dan Humidifier # 1 set Nasal Canula dan Masker Oksigen	√	√	√	√	√	√	√
22	a Automatic Ambulance Stretcher, Roll in Chair Cot; Eropa Produk	√	√	√	√	√	√	√
22	b Automatic Ambulance Stretcher, Roll in Chair Cot; Asia Produk	√	√	√	√	√	√	√
22	c Automatic Ambulance Stretcher, Roll In Cot; Eropa Produk	√	√	√	√	√	√	√
22	d Automatic Ambulance Stretcher, Roll in Cot; Asia Produk	√	√	√	√	√	√	√
23	Keranda Jenazah	√	√	√	√	√	√	√
24	Folding Scoop Stretcher	√	√	√	√	√	√	√



Urusan Toyota jadi mudah!

PT.ASTRA INTERNASIONAL Tbk TSO



WIRA TOYOTA
Authorized Dealer

Authorized Toyota Dealer



SEMUA LEBIH MUDAH



PT.NEW RATNA MOTOR
WIL : JATENG , DIY



AMBULANCE TOYOTA HILUX

TOYOTA

SPESIFIKASI PERLENGKAPAN AMBULANCE TOYOTA HILUX



Type Ambulance		Transport	Basic	Econo	Mobil Jenazah
Exterior dan Interior					
1	- Karoseri body medium roof dilengkapi 3 set lampu perimeter, merah - merah - Plat standard karoseri 1 mm - Kaca samping fixed bonding tempered rayben - Pintu samping tengah kiri model swing dengan kaca yang dapat digeser - Pintu belakang model hatchback dengan kaca fixed tempered - Partisi pembatas ruang driver dilengkapi kaca tempered model geser - Interior plafon model plat finishing cat solid kombinasi Aluminium Komposit, mudah dibersihkan - Lampu penerangan kabin standar karoseri, LED - Pengecatan body warna putih solid - Foot step belakang - AC Double blower	√	√	√	√
2	LED Flash Light Bar Oval, 12VDC, Merah - Merah	√	√	√	√
3	Sirene multi suara lengkap dengan MIC, 12VDC, 100watt	√	√	√	√
4	Logo dan tulisan standard , reflektif sticker / kombinasi digital printing	√	√	√	√
5	Kaca film 60%-80%	√	√	√	√
6	Modifikasi Lantai, Plywood dilapis Vynil, Hospital Grade	√	√	√	√
7	Jok Dokter / Paramedik	√	√	√	√
8	Jok Pengiring / Paramedik model Box dengan ruang untuk menyimpan peralatan	√	√	√	√
9	Lampu sorot kabin belakang model LED	√	√	√	√
10	APAR kapasitas 1 Kg lengkap dengan braket	√	√	√	√
11	Lemari Peralatan Medis, bahan plywood finishing akrilik lengkap dengan Wastafel Gantungan infus kapasitas 2 kolf, hook dapat digeser dan dilipat, dilengkapi dengan straps botol infus	Full Rack	Full Rack	Half Rack	
12	2 buah lampu periksa Pasien, dapat di atur arah cahayanya, 3W Philips LED Spot LV	√	√	√	
13	Bumper belakang dilapisi plat stainless steel untuk pelindung benturan Stretcher Landasan / Base Stretcher plywood dilapis dengan vynil dengan ruang tempat Scoop Stretcher dan dilengkapi dengan rel, stopper serta pengunci Stretcher	√	√	√	
14	Sumber Listrik DC 12VDC 3 outlet	√	√	√	
15	Fixed Central Gas System # 2 buah Tabung Oxygen kap. 1 m3 # 2 buah Regulator Oxygen Standard # 1 set Selang Oxygen tekanan tinggi, SMC Japan # 1 set Pengatur keluaran Oxygen secara otomatis, terdiri dari : pressure sensor, layar monitor 3,5" menampilkan indikator pemakaian tabung primary dan sekunder, visual persentase isi tabung oksigen dengan akurasi 1% dan pembacaan tekanan dengan satuan psi, alarm buzzer kondisi oksigen akan habis dengan manual saklar untuk reset # 2 buah keluaran dinding dengan tulisan "OXYGEN" # 1 set Flowmeter dan Humidifier # 1 set Nasal Canula dan Masker Oksigen	√	√		
16	Basic Oxygen Set # 1 buah Tabung Oxygen 1 m3 # 1 buah Regulator Oxygen Standard # 1 set Flowmeter dan Humidifier # 1 set Nasal Canula dan Masker Oksigen # 1 set Alarm Oksigen			√	
17a	Automatic Ambulance Stretcher, Roll in Chair Cot; Asia Produk	√			
17b	Automatic Ambulance Stretcher, Roll in Cot; Asia Produk		√	√	
18a	Keranda Jenazah Stainless Steel				√
18b	Folding Scoop Stretcher	√	√	√	



Ususan Toyota jadi mudah!



Authorized Toyota Dealer



PT. NEW RATNA MOTOR
WIL : JATENG , DIY



PT.ASTRA INTERNASIONAL Tbk SO



AMBULANCE TOYOTA INNOVA

TOYOTA SPESIFIKASI PERLENGKAPAN AMBULANCE TOYOTA INNOVA



Type Ambulance		Transport	Basic	Econo	Mobil Jenazah
1	LED Flash Light Bar Oval, 12VDC, Merah - Merah	√	√	√	√
2	Sirene multi suara lengkap dengan Mic, 12VDC, 100watt	√	√	√	√
3	Logo dan tulisan standard , reflektif sticker / kombinasi digital printing	√	√	√	√
4	Kaca film 60%-80%	√	√	√	√
5	Modifikasi Lantai, Plywood dilapis Vynil, Hospital Grade	√	√	√	√
6	Jok Dokter / Paramedik	√	√	√	√
7	Jok Pengiring / Paramedik model Box	√	√	√	√
8	Lampu sorot kabin belakang model LED	√	√	√	√
9	APAR kapasitas 1 Kg lengkap dengan braket	√	√	√	√
10	Lemari Peralatan Medis, bahan plywood finishing akrilik	√	√	√	√
11	Sumber Listrik DC 12VDC 3 outlet	√	√		
12	Gantungan infus kapasitas 2 kolf, hook dilipat, dilengkapi dengan straps botol infus	√	√	√	
13	2 buah lampu periksa Pasien, dapat di atur arah cahayanya, 3W Philips LED Spot LV	√	√	√	
14	Bumper belakang dilapis plat stainless steel untuk pelindung benturan Stretcher	√	√	√	
15	Landasan / Base Stretcher plywood dilapis dengan vynil dengan ruang tempat Scoop Stretcher dan dilengkapi dengan rell, stopper serta pengunci Stretcher	√	√	√	
	Fixed Central Gas System				
	# 2 buah Tabung Oxygen kap. 1 m3				
	# 2 buah Regulator Oxygen Standard				
	# 1 set Selang Oxygen tekanan tinggi, SMC Japan				
16a	# 1 set Pengatur keluaran Oxygen secara otomatis, terdiri dari : pressure sensor, layar monitor 3,5" menampilkan indikator pemakaian tabung primary dan sekunder, visual persentase isi tabung oksigen dengan akurasi 1% dan pembacaan dengan satuan psi, alarm buzzer kondisi oksigen akan habis dengan manual saklar untuk reset	√	√		
	# 2 buah keluaran dinding dengan tulisan "OXYGEN"				
	# 1 set Flowmeter dan Humidifier				
	# 1 set Nasal Canula dan Masker Oksigen				
	Basic Oxygen Set				
	# 1 buah Tabung Oxygen kap. 1 m3				
	# 1 buah Regulator Oxygen Standard				
	# 1 set Flowmeter dan Humidifier				
16b	# 1 set Nasal Canula dan Masker Oksigen			√	
	# 1 Set Alarm Oksigen				
17a	Automatic Ambulance Stretcher, Roll in Cot; Asia Produk	√			
17b	Automatic Ambulance Stretcher, Roll in Cot; Asia Produk		√	√	
18	Keranda Jenazah Stainless Steel				√
19	Folding Scoop Stretcher	√	√	√	



Urusan Toyota jadi mudah!

PT.ASTRA INTERNASIONAL Tbk TSO



Authorized Toyota Dealer



Authorized Dealer



SEMUA LEBIH MUDAH



PT.NEW RATNA MOTOR
WIL : JATENG , DIY



AMBULANCE LUXIO / GRANMAX

DAIHATSU

SPEKIFIKASI PERLENGKAPAN AMBULANCE DAIHATSU LUXIO / GRANMAX



Type Ambulance		Ambulance 1	Ambulance 2	Ambulance 3	Mobil Jenazah
Exterior dan Interior					
1	LED Flash Light Bar Oval , 12VDC, Lifetime 10.000hrs	✓	✓	✓	✓
2	Multi Sound Sirene System , 12VDC, 100watt	✓	✓	✓	✓
3	Logo & Lettering Standard , Reflektif Sticker	✓	✓	✓	✓
4	Kaca Film 60%-80%	✓	✓	✓	✓
5	Pelindung Bumper Belakang dari benturan stretcher , berupa alat atau hambalan dari stainless steel	✓		✓	
6	Modifikasi Lantai , Plywood dilapis Vynil, Hospital Grade	Antibakteri	Antibakteri	Koin	Koin
7	Attendant Seats (Jok Pengantar / Pengiring) model Box	✓	✓	✓	✓
8	Gantungan Infus , kapasitas 2 ampul dilengkapi dg straps / pengikat botol infus	✓	✓	✓	
9	Lampu Periksa Pasien , Model Geser (Sliding)	✓	✓	✓	
10	Lampu Sorot Kabin belakang	✓	✓	✓	✓
11	Fire Extinguisher cap. 1 kg with Bracket	✓	✓	✓	✓
12	Lemari Peralatan Medis , Plywood finishing acrylic + Wastafel	✓	✓		
13	Washtafel			✓	
14	Sumber Listrik DC 3 Outlet	✓	✓	✓	
15	Landasan / Base Stretcher dilengkapi pengunci dan stoper stretcher	✓	✓	✓	
16	Panel kontrol saklar				
17	Modifikasi plafon dari bahan fiber				
	Fixed Central Gas System				
16a	# 2 buah Tabung Oxygen kap. 1 m3	✓	✓		
	# 2 buah Regulator Oxygen Standard	✓	✓		
	# 1 set Selang Oxygen tekanan tinggi	✓	✓		
	# 1 set Pengatur keluaran Oxygen secara otomatis lengkap dengan indikator	✓	✓		
	# 1 buah keluaran dinding dengan tulisan "OXYGEN"	✓	✓		
	# 1 set Flowmeter dan Humidifier	✓	✓		
	# 1 set Nasal Canula dan Masker Oksigen	✓	✓		
	Basic Oxygen				
16b	# 1 buah Tabung Oxygen kap. 1 m3			✓	
	# 1 buah Regulator Oxygen Standard			✓	
	# 1 set Flowmeter dan Humidifier			✓	
	# 1 set Nasal Canula dan Masker Oksigen			✓	
17a	Automatic Ambulance Stretcher, Roll in Chair Cot	✓			
17b	Automatic Ambulance Stretcher, Roll in Cot		✓	✓	
18	Keranda Jenazah, Stainlist steel				✓
19	Scoop Stretcher	✓	✓	✓	



Type Ambulance		VIP	MED	STD +	STD	JENAZAH
EXTERIOR						
1	LED flash lightbar oval, 12VDC, Merah - merah	✓	✓	✓	✓	✓
2	Sirene multi suara lengkap dengan mic	✓	✓	✓	✓	✓
3	Logo dan Tulisan standar dari bahan sticker schotlite	✓	✓	✓	✓	✓
4	Kaca film 60% - 80%	✓	✓	✓	✓	✓
5	Bumper belakang mobil dilapisi plat stainless steel untuk ambalan Stretcher	✓	✓	✓	✓	
INTERIOR						
6	Modifikasi lantai dari Plywood dilapis dengan karpet vinyl	✓	✓	✓	✓	✓
7	Tempat duduk pengiring / perawat model box untuk penyimpanan peralatan	✓	✓	✓	✓	✓
8	Gantungan infus model geser kapasitas 2 kolf	✓	✓	✓	✓	
9	2 (dua) buah lampu periksa	✓	✓	✓	✓	
10	Lampu sorot belakang model spot light	✓	✓	✓	✓	
11	APAR kapasitas 1 kg	✓	✓	✓	✓	✓
12	Lemari peralatan dengan finishing akrilik dilengkapi wastafel	✓	✓	✓		
13	Washtafel dan Kotak Obat Plastik				✓	
14	Sumber Listrik DC 3 Outlet	✓	✓	✓	✓	
15	Landasan tandu / Base Stretcher dilengkapi dengan tempat scoop stretcher	✓	✓	✓	✓	
Medical Equipment						
	Sistem oksigen sentral					
	# 2 buah Tabung Oksigen kapasitas 1m3					
	# 2 buah Regulator Oksigen standar					
16a	# 1 set selang Oksigen tekanan tinggi	✓	✓			
	# 1 set Pengatur keluaran Oxygen secara otomatis lengkap dengan indikator					
	# 1 buah keluaran dinding dengan tulisan "OXYGEN"					
	# 1 set Flowmeter dan Humidifier					
	# 1 buah Nasal Cannula dan 1 buah Masker Oksigen					
	Oksigen Therapy					
	# 1 buah Tabung Oksigen kapasitas 1m3					
	# 1 buah Regulator Oksigen standar					
16b	# 1 set Alarm Indikator Oksigen			✓	✓	
	# 1 set Flowmeter dan Humidifier					
	# 1 buah Nasal Cannula dan 1 buah Masker Oksigen					
17a	Automatic Ambulance Stretcher Roll in Chair Cot	✓				
17b	Automatic Ambulance Stretcher Roll in Cot		✓	✓	✓	
18	Folding Scoop Stretcher	✓	✓	✓	✓	
19	Keranda Jenazah stainless steel					✓



Type Ambulance		Emergency 1	Emergency 2	Deluxe AGD	Deluxe 1	Deluxe 2	Deluxe 3	Mobil Jenazah
Exterior dan Interior								
1	LED Flash Light Bar Oval, 12VDC, Lifetime 10.000hrs	✓	✓	✓	✓	✓	✓	✓
2	Multi Sound Sirene System, 12VDC, 100watt	✓	✓	✓	✓	✓	✓	✓
3	Logo & Lettering Standard, Reflektif Sticker	✓	✓	✓	✓	✓	✓	✓
4	Kaca Film 60%-80%	✓	✓	✓	✓	✓	✓	✓
5	Modifikasi plafon dari bahan fiber							
7	Modifikasi Lantai, Plywood dilapis Vynil, Hospital Grade	Antibakteri	Antibakteri	Antibakteri	Antibakteri	Antibakteri	Antibakteri	Koin
8	Attendant Seats (Jok Pengantar/Paramedic) model Box dg ruang utk menyimpan peralatan	✓	✓	✓	✓	✓	✓	✓
9	Lampu Sorot Kabin belakang	✓	✓	✓	✓	✓	✓	✓
10	Fire Extinguisher with Bracket	✓	✓	✓	✓	✓	✓	✓
11	Paramedic Seat (Jok Dokter)	✓	✓	✓	✓	✓	✓	
13	Lemari Peralatan Medis, Plywood finishing Acrylic lengkap dengan Wastafel	✓	✓	✓	✓	✓	✓	
14	Sumber Listrik DC 3 Outlet	✓	✓	✓	✓	✓	✓	
15	Gantungan Infus, kapasitas 2 ampul dilengkapi dg straps / pengikat botol infus	✓	✓	✓	✓	✓	✓	
16	Lampu Periksa Pasien	✓	✓	✓	✓	✓	✓	
17	Pelindung Bumper Belakang dari benturan stretcher, berupa alat atau hambalan dari stainless steel	✓	✓	✓	✓	✓	✓	
18	Landasan / Base Stretcher dg Ruang tempat scoop stretcher dilapis Vynil Hospital Grade dan dilengkapi dg Rell, Stopper serta pengunci stretcher	✓	✓	✓	✓	✓	✓	
19	Fixed Central Gas System							
	# 2 buah Tabung Oxygen kap. 1 m3	✓	✓	✓	✓	✓	✓	
	# 2 buah Regulator Oxygen Standard	✓	✓	✓	✓	✓	✓	
	# 1 set Selang Oxygen tekanan tinggi	✓	✓	✓	✓	✓	✓	
	# 1 set Pengatur keluaran Oxygen dengan valve ON/OFF	✓	✓	✓	✓	✓	✓	
	# 1 buah keluaran dinding dengan tulisan "OXYGEN"	✓	✓	✓	✓	✓	✓	
	# 1 set Flowmeter dan Humidifier	✓	✓	✓	✓	✓	✓	
	# 1 set Nasal Canula dan Masker Oksigen	✓	✓	✓	✓	✓	✓	
20	Automatic Ambulance Stretcher, Roll in Chair Cot	✓	✓	Europa	✓	✓		
	Automatic Ambulance Stretcher, Roll in Cot						✓	
	Keranda Jenazah dengan conveyor							✓
21	Folding Scoop Stretcher	✓	✓	✓	✓	✓	✓	
Medical Equipment								
1	Wall Aneroid Sphygmomanometer with Stethoscope	✓	✓	✓	✓	✓	✓	
2	Extrication Collar	✓	✓					
3	Head Immobilization	✓	✓					
4	Long Spinal Board	✓	✓					
5	Air Splint	✓	✓					
6	Extrication Device	✓	✓					
7	Emergency Kit Soft Case	✓	✓	✓	✓			
8	Burn Kit Soft Case	✓	✓					
9	Power Converter DC to AC	1000W	1000W	2000W				
10	Transport Pasien Monitor Built in Battery	✓	✓					
11	Portable Suction Unit with Build in Battery	✓	✓					
12	Bag Mask Resucitator set							
13	Portable Resucitator		✓					
14	Portable Ventilator	✓						
15	Automatic External Defibrilators		✓					
16	Automatic External Defibrilators with ECG Monitor	✓						

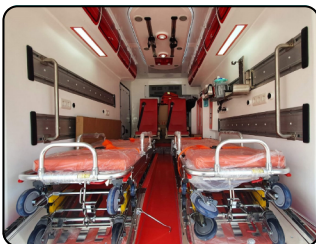


Type Ambulance		Transport Plus	Transport 1	Transport	Basic Plus	Basic 1	Basic	Mobil Jenazah
Exterior dan Interior								
1	LED Flash Light Bar Oval, 12VDC, Merah - Merah	√	√	√	√	√	√	√
2	Sirene multi suara lengkap dengan Mic, 12VDC, 100watt	√	√	√	√	√	√	√
3	Logo dan tulisan standard , reflektif sticker / kombinasi digital printing	√	√	√	√	√	√	√
4	Kaca film 60%-80%	√	√	√	√	√	√	√
5	Lampu sorot kabin belakang model LED	√	√	√	√	√	√	√
6	Bumper belakang dilapisi plat stainless steel untuk pelindung benturan Stretcher Plafon dan kompartemen/rak atas dari bahan fiber, dengan aksesoris: - Tempat tisu dan tempat masker - Steel bar untuk pegangan Paramedik	√	√	√	√	√	√	
7	- Lampu penerangan peralatan dan lampu penerangan ruangan model LED drop ceiling terbuat dari rangka aluminium extrude yang berfungsi sebagai peredam panas	√	√		√	√		
8	Penyekat kabin driver dari bahan fiber dilengkapi dengan kaca tempered	√	√	√	√	√	√	√
9	Intercom dua arah untuk komunikasi antara kabin driver dengan kabin perawatan	√	√	√	√	√	√	√
10	Lantai, PVC Sheet dilapis Vynil, Hospital Grade	√	√	√	√	√	√	√
11	Jok Pengiring / Paramedik model box dengan ruang untuk menyimpan peralatan bahan plat besi M5 finishing powder coating, dilengkapi safety belt 2 titik Lemari peralatan medis, terbuat dari bahan fiber dengan aksesoris: - Tempat sarung tangan 3 ukuran - Dua buah rel untuk braket peralatan kesehatan bahan aluminium extrude dan braket alat kesehatan - Roll bar untuk tempat Syringe Pump dan Infuse Pump - Wastafel	√	√	√	√	√		√
12	a Lemari Peralatan Medis, bahan plywood finishing akrilik lengkap dengan Wastafel			√		√		
13	APAR kapasitas 1 Kg lengkap dengan braket	√	√	√	√	√		√
14	a Jok Dokter / Paramedik model fix lengkap dengan safety belt 2 titik b Jok Dokter / Paramedik model dapat berputar posisi, dudukan dapat dilipat, sandaran reclining dilengkapi sabuk pengaman 3 titik			√		√		
15	2 buah lampu periksa Pasien, dapat di atur arah cahayanya, 3W Philips LED Spot LV	√	√	√	√	√	√	
16	Gantungan infus kapasitas 2 kolf, hook dapat digeser dan dilipat, dilengkapi dengan straps botol infus	√	√	√	√	√	√	
17	a Landasan / Base Stretcher full stainless steel dengan ruang tempat Scoop Stretcher dan dilengkapi dengan rel, stopper serta pengunci Stretcher b Landasan / Base Stretcher plywood dilapis dengan vynil dengan ruang tempat Scoop Stretcher dan dilengkapi dengan rel, stopper serta pengunci Stretcher	√	√		√			
18	Sumber listrik DC 12VDC 3 outlet dan AC 220VAC 6 outlet	√	√	√	√	√	√	
19	Power Inverter DC to AC, 1500W Pure Sine Wave	√	√	√	√	√		
20	a Kontrol Kelistrikan dengan panel touch screen b Kontrol Kelistrikan dengan saklar manual model piano lengkap dengan dimmer dan indikator voltage accu	√	√	√	√		√	√
21	Fixed Central Gas System # 2 buah Tabung Oxygen kap. 1 m3 # 2 buah Regulator Oxygen Standard # 1 set Selang Oxygen tekanan tinggi, SMC Japan # 1 set Pengatur keluaran Oxygen secara otomatis, terdiri dari : pressure sensor, layar monitor 3,5" menampilkan indikator pemakaian tabung primary dan sekunder, visual persentase isi tabung oksigen dengan akurasi 1% dan pembacaan tekanan dengan satuan psi, alarm buzzer kondisi oksigen akan habis dengan manual saklar untuk reset # 2 buah keluaran dinding dengan tulisan "OXYGEN" # 1 set Flowmeter dan Humidifier # 1 set Nasal Canula dan Masker Oksigen	√	√	√	√	√	√	
22	a Automatic Ambulance Stretcher, Roll in Chair Cot; Eropa Produk b Automatic Ambulance Stretcher, Roll in Chair Cot; Asia Produk c Automatic Ambulance Stretcher, Roll In Cot; Eropa Produk d Automatic Ambulance Stretcher, Roll in Cot; Asia Produk	√	√	√	√		√	√
23	Keranda Jenazah							√
24	Folding Scoop Stretcher	√	√	√	√	√	√	

INTERIOR



INTERIOR





OFFICE :

Jl. Bhakti IV No.46 RT.008/RW.002, Tegal Alur,
Kalideres, Jakarta Barat Indonesia 11820
Phone : + 62 21 - 5595 9140
Fax. : + 62 21 - 5596 3272

WORKSHOP :

Jl. Prepedan Dalam No. 69
RT.008 / RW.009, Kamal, Kalideres,
Jakarta Barat Indonesia 11810



Maps